



**COMMUNITY PATROL SERVICE USA**  
**CASTRO / DUBOCE TRIANGLE NEIGHBORHOOD**  
**CRIME ACTIVITY REPORT**

The following information is provided from the Crime Mapping system ([www.CrimeMapping.com](http://www.CrimeMapping.com)) which receives reports from police departments and agencies around the country based on calls for service. This is **NOT** an all inclusive list, and some calls to police may not be actual crimes or may be re-categorized on scene or later.

The information is provided in visual format to allow you to easily view crime incidents that have occurred within the preceding month in the neighborhood indicated above.

If you wish to obtain more information or details regarding specific incidents, go to the Crime Mapping web site, or contact your local police station.

You may sign up for daily reports of crime incidents in your neighborhood on the Crime Mapping web site if you seek more timely or detailed information for your neighborhood. You may also sign up for newsletters from your SFPD Police Station Captain by going to the SFPD web site ([www.SF-Police.org](http://www.SF-Police.org)).

Sincerely,

***Ken Craig***

Chief of Patrol

Tel: 415.967.3080

E-mail: [CommunityPatrolService@gmail.com](mailto:CommunityPatrolService@gmail.com)

Facebook: [CommunityPatrolUSA](https://www.facebook.com/CommunityPatrolUSA)

***“Building Safer Neighborhoods by Collaborating on Community Safety and Security”***

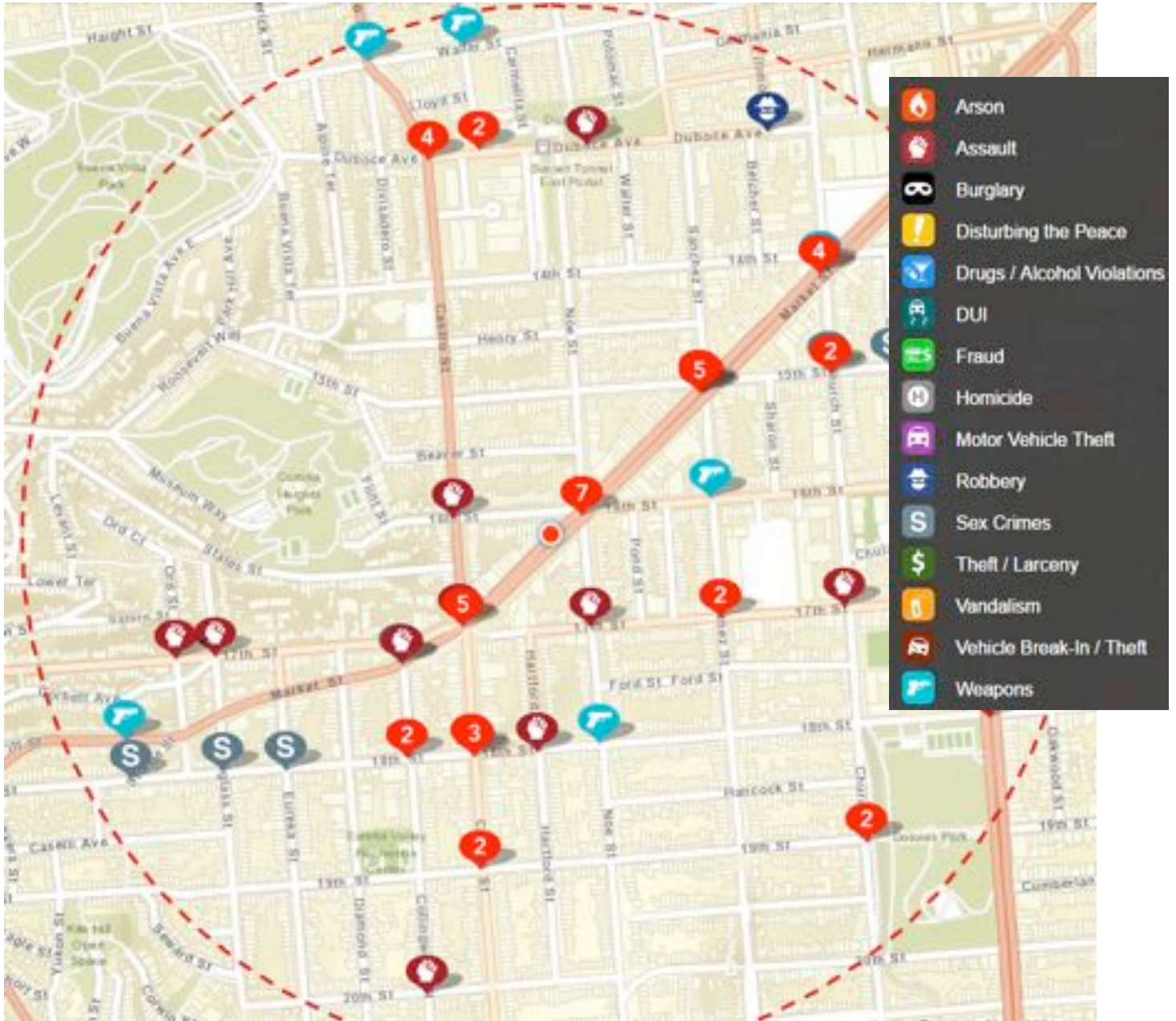
***Community Patrol Service USA is a not for profit, entirely volunteer run, organization that seeks to build comprehensive collaborative efforts on safety and security between residents, businesses, private security and law enforcement agencies. We also support and assist in the development of Community Walking Patrols and advocate for general safety and security measures at the neighborhood, city, state and national level.***

# INCIDENT LOCATIONS 12/01/2017 through 12/31/2017 FROM CRIMEMAPPING DATA

(0.5 MILE RADIUS OF 2300 MARKET STREET SHOWING SFPD CALLS FOR SERVICE ONLY)

**HOMICIDE, ARSON, ASSAULT W/ DEADLY WEAPON, ASSAULT / BATTERY, SEXUAL ASSAULT, ROBBERY, WEAPONS,**

JAN	FEB	MAR	APR	MAY	JUN	JUL	AUG	SEP	OCT	NOV	DEC	TOTAL
76	71	98	95	100	106	98	90	108	81	80	86	1089





# INCIDENT LOCATIONS 12/01/2017 through 12/31/2017 FROM CRIMEMAPPING DATA

(0.5 MILE RADIUS OF 2300 MARKET STREET SHOWING SFPD CALLS FOR SERVICE ONLY)

## BURGLARY, VEHICLE THEFT, PETTY THEFT, FRAUD, THEFT FROM VEHICLE, VANDALISM, NOISE NUISANCE, DUI

JAN	FEB	MAR	APR	MAY	JUN	JUL	AUG	SEP	OCT	NOV	DEC	TOTAL
261	213	270	255	269	268	285	247	253	302	232	200	3055



# Community Patrol Service USA



**Chief Ken Craig,**  
Community Patrol Service USA  
San Francisco Headquarters

[CommunityPatrolService@gmail.com](mailto:CommunityPatrolService@gmail.com)  
<https://www.facebook.com/CommunityPatrolUSA>  
(415) 967-3080 Voice-Mail

Community Patrol Service USA (CPS) is a not for profit entirely volunteer run organization dedicated to developing and enhancing the safety and security of neighborhoods and communities through the establishment or advancement of a number of safety initiatives that involve the active collaboration of residents, business, private security, law enforcement and governmental agencies at all levels.

CPS works closely with City, County and many other law enforcement, governmental and community groups to achieve these goals. All CPS volunteers are unpaid community minded individuals.

We promote and provide information and assistance in the deployment of 6 major program initiatives:

1. Community **WATCH** Program (CWP)
2. Crime **ACTIVITY** Reporting (CAR)
3. Crime **ALERT** System (CAS)
4. Community On **PATROL** Service (COPS)
5. Community **SAFETY** Collaborative (CSC)
6. Community **EDUCATION** Outreach (CEO)

CPS facilitates the development of this collaborative and mutually supportive effort. We work to educate residents, businesses, residential and condominium owners and local associations to the benefits and need for such collaborations. We help to develop relationships with local law enforcement and local government agencies in support of mutual collaboration and we provide some information and guidance on how to create steering groups, conduct effective meetings and develop public relations strategies in support of your neighborhoods overall goals. We also provide training to residents and businesses in a number of relevant and useful topics.

Please feel free to contact us at your convenience and we will be happy to meet with you to discuss your neighborhood challenges, and see how we can work together to develop enhanced safety and security for everyone in your community.

## Castro Community on Patrol



**Chief Gregg Carey**  
Castro Community On Patrol (CCOP)  
c/o SAFE  
850 Bryant St Room 135  
San Francisco CA 94103  
  
Tel: 415-ASK-CCOP (275-2267)  
[info@CastroPatrol.org](mailto:info@CastroPatrol.org)  
[www.CastroPatrol.org](http://www.CastroPatrol.org)  
[Find us on Facebook](#)

Established in November of 2006, CCOP is a grassroots non-profit C.O.P.S. organization dedicated to promoting safety and safety awareness in the Castro and Duboce Triangle neighborhoods. Their mission is to create a safer neighborhood for those who live in, work in, or visit the community in collaboration with community organizations, Patrol Special Police and the San Francisco Police Department.

Anyone 18 and older is encouraged to join and participate in the basic patrol training class below. You are not obligated to patrol upon completion of the class, but will learn some really useful information during the class. If you wish to patrol, we ask for a minimum of 1x 3 hour patrol per month, though you may certainly do more if you have the desire and commitment.

**JOIN CASTRO PATROL AND HELP KEEP THE NEIGHBORHOOD SAFE!**

## **Patrol Volunteer Basic Training Class #062**

**Saturday January 20, 2018**

**1:00PM to 4:00PM**

**IN THE HEART OF THE CASTRO**

To pre-register for this class navigate to [www.CastroPatrol.org](http://www.CastroPatrol.org) and use the SIGN UP NOW button on the home page.